

Towry Towers, Plot 1, Towry Close, Off Idejo Street,  
Victoria Island, Lagos, Nigeria

Unit 211 Eton Avenue, Primrose Hill, London,  
UK NW3 3EL, England.

P.O.X 1194, N'Djamena, Tchad.

T +234 (1) 903 235 4/5

E [tcar08@yahoo.com](mailto:tcar08@yahoo.com)

w [www.towrycoker.com](http://www.towrycoker.com)

## **Groupe TCA Internationale S.A.**

Creating opportunities in  
Architecture / Construction / Engineering /  
Planning / Infrastructure / Renewable Energy /  
Housing / Health / Mining / Oil and Gas.  
Knowledge and Environmental Awareness in Africa.





# CONTENTS



INTRO 03

TOWRY-COKER  
ASSOCIATES 04

SWISSASSET AG 23

CARBON CREDIT  
CONSULTANCY 25

WAOS 27



**Groupé TCA Internationalé S.A.**

Creating opportunities in  
Architecture / Construction / Engineering /  
Planning / Infrastructure / Renewable Energy /  
Housing / Health / Mining / Oil and Gas.

Knowledge and Environmental Awareness in Africa.



Groupe TCA Internationalé S.A.



Turn Key Specialists

West African Oilfield Services

# WAOS E&P TURN-KEY

Lagos Office  
4 Ibiyinka Olorunbe Close  
Victoria Island, Lagos, Nigeria  
Phone +234.(0)1.280.0996  
Fax +234.(0)1.280.0995

Port Harcourt  
Plot 72, Trans Amadi Industrial Layout  
Port Harcourt, Nigeria  
Phone +234.(0)84.232.066

GTI S.A. is an international conglomerate with key interests & involvement in the following industries & sub-sectors of industry:

- Infrastructure Development
  - Construction
  - Engineering
  - Renewable Energy
  - Housing
  - Health
  - Mining
  - Oil & Gas Exploration & Production
  - Finance Mechanisms for Hydrocarbon and Mineral Development and Infrastructure Development

In consonance with our Group's desire to participate in the development and modernization of Africa, we have formed GTI-Chad to assist the Republic of Chad with it's continuing efforts to develop the infrastructure of the Nation via improved sources of revenue for Government and improved infrastructure for the citizenry of the Country.

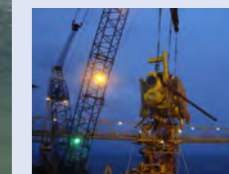
Our brochure highlights some of the key partnerships that GTI have entered into to assist in implementing our corporate goals to further the development of the Republic of Chad. The following key players have partnered with GTI to enhance the already robust capabilities of GTI-Chad

- TCA International S.A.
  - Swiss Asset A.G.
  - West African Oilfield Services

We trust the following information displays the breadth of our capabilities. Please feel free to contact us for further consultation on any of your requirements.



Photograph predates installation of the pipelay system on the Barge



## Mission Statement

Creating opportunities in  
Architecture / Construction / Engineering /  
Planning / Infrastructure / Renewable Energy /  
Housing / Health / Mining / Oil and Gas.

Knowledge and Environmental Awareness in Africa.

Towry Towers, Plot 1, Towry Close, Off Idejo Street,  
Victoria Island, Lagos, Nigeria

Unit 211 Eton Avenue, Primrose Hill, London,  
UK NW3 3EL, England.

P.O.X 1194, N'Djamena, Tchad.

T +234 (1) 903 235 4/5

E tcar08@yahoo.com

w www.towrycoker.com



E&P Turn Key Profile

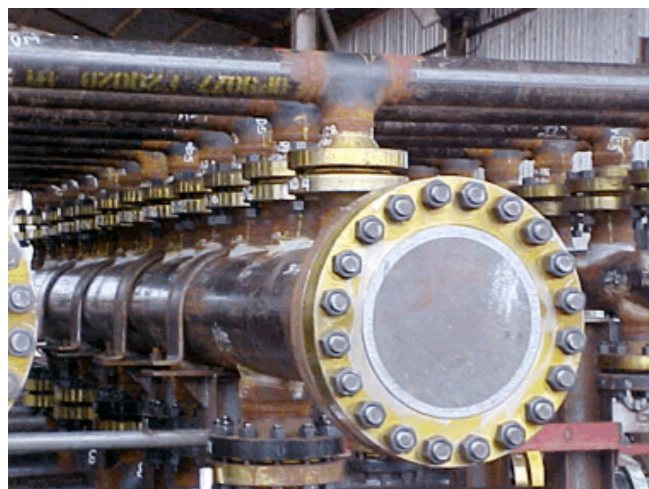


# Station Facility Construction

Oil and gas production requires surface facilities to produce, process, store and transport oil and gas. WAOS has extensive experience and capability constructing and modifying such facilities; both onshore and offshore. These facilities include pump and flow stations, gas processing facilities, gas compression and metering stations.

WAOS is adept at the planning and engineering of station facilities to best address E&P export requirements in line with production planning. In our ability to plan, engineer, construct and integrate into the overall E&P field development, WAOS has a significant advantage to deliver broader project workscopes.

Construction of station facilities, whilst not so capital-intensive as pipeline construction, is characterized by complex logistics and scheduling, particularly in locations where seasonal weather patterns limit construction options or limited site access occurs.



(Founded 1976)

## TOWRY-COKER ASSOCIATES LIMITED

Chartered Architects/Engineers/Urban Planners/  
Project Managers/Development Consultants

T: +234 1 903 235 4/5  
e: tcarc08@yahoo.com  
e: info@towrycoker.com

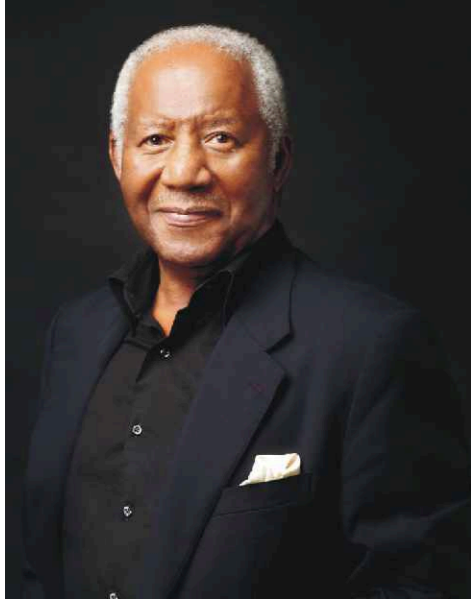


www.towrycoker.com

35 years

Welcome to

# TOWRY-COKER ASSOCIATES



Dr. Lanre Towry-Coker is the son of distinguished Civil Engineer who in the early 60's was the planning adviser to the late Malayan Prime Minister, Tunku AbdulRahman. Dr. Lanre Towry-Coker was educated at the popular St. Matthias Roman Catholic (Primary) School, Lafiaji, in Lagos, and at the Kingston College, Surrey, in the United Kingdom, where he obtained the GCE 'O & A' Levels. He later received his academic training at the prestigious Architectural Association School of Architecture, London, (after passing the entrance examination). He then went to Thames University, where he completed his Royal Institute of British Architects' part 1 exams. Dr. Towry-Coker, who holds a Post-Graduate qualification in Architecture from the University of North East London, completed his professional training at the world famous Royal Institute of British Architects (RIBA). He is also an Associate of the Chartered Institute of Arbitrators in the United Kingdom (ACI.Arb.) and a Fellow of the Nigerian Institute of Architects (FNIA).

A graduate of the renowned Harvard University Graduate School of Business Administration (OPM), in the United States of America (which he attended as a full-fledged professional in the course of his brilliant career).

A seasoned Architect, who started his own architectural practice in 1976. Dr. Towry-Coker has originated numerous prestigious building all over Nigeria and has won numerous competitions. He was one of the original planners of Abuja and takes credit for originating the initial concept of the first hotel in the relocated Federal Capital, Abuja Sheraton Hotel (now re-christened Meridien) won the competition to design the Abuja Conference Centre which was completed. Not long ago he was adjudged the best entry in an international competition (which attracted a total of 110 entries) to design the World Bank resident mission headquarters, and residences in Abuja, which was Commissioned. He has in his professional career designed and supervised several major buildings all over Nigeria.

A past Chairman of the Public Relations Committee and International Relations Committee of the Nigerian Institute of Architects (NIA). Dr. Towry-Coker has led numerous delegations of the NIA to different types of organized parallel international and regional professional bodies. He was NIA's representative at the world photo – volcanic association arranged by the International Union of Architects and led the Institute's delegation to a forum held in Australia under the auspices of the Commonwealth Institute of Architects. More recently in 1997, he was the head of a Nigerian mission to the United States Building Business Symposium.

His public sector career has been no less eventful and memorable. He was chairman Lagos State Waste Disposal Board, and was the Chairman of the Lagos State Luna Parks. He was also privileged to serve as Chairman of the Lagos State Investment Promotion Council and on the Technical Committee on Open Spaces. He is an ex-member of the State Tenders Board. In 1999, Dr. Towry-Coker was appointed the pioneer Honourable Commissioner for Housing in Lagos State. He served as a full cabinet member for 4 years, before returning to the private sector in 2003.

He was a Member of the Presidential Committee on Housing and Urban Development, inaugurated by the President Commander-in-Chief of the Armed Forces, Chief Olusegun Obasanjo, in 2001-2002. During his tenure as Hon. Commissioner, he completed no less than four large abandoned estates and initiated another Fifteen housing estates in Lagos State.

Dr. Towry-Coker, entered partisan politics in 1992 when he contested the Lagos Central Senatorial Seat under the banner of the former Social Democratic Party (SDP). He has over the years authored different publications on wide-ranging topical subjects which are of timeless relevance. These include 'Towards a Lagos State Environmental Protection Agency' (a seminar blue print). Low-income Housing, Technology Transfer: The Construction Dimension and The Metro –Line Affair (a review / plan for mass transportation in Lagos State), among others.

A much travelled individual whose professional practice has taken him to no fewer than 36 countries scattered all over six continents. He is a member of the Nigerian-Asian Chamber of Commerce, Nigerian-British Chamber of Commerce and the Nigerian Institute of International Affairs (NIIA). A founder member of the Nigerian-German Business Council. He is also a member of the Nigerian Finnish Chamber of Commerce. He belongs to the boards of a number of companies and bodies including charitable organization like the Chris Ogunbanjo Foundation, Centre for Conflict Resolution and the Centre for the Promotion of an Industrial Society.

A warm and outgoing personality who in 1984 was nominated Outstanding Young Person (OYP) of the metropolis by the Jaycees (diminution of the Junior Chamber of Commerce International), a non-governmental organization. Dr. Towry-Coker is a member of quite a number of charitable, social and sports clubs and organizations, notably the Lions Club International, Metropolitan Club (Lagos), Ikoyi Club (Lagos), Polo Club (Lagos) the Lagos Motor Boat Club, and Yoruba Tennis Club. Architect, Urban –Cum- Transportation Planner, Project Manager and Author all rolled into one, Dr. Towry-Coker, with a knowledge of French, German, Russian enjoys writing, researching and organizing in addition to playing badminton, golf, squash-rackets and tennis occasionally.

He is happily married with three children, all of whom are graduates from overseas Universities like Reading University (UK), Warwick University (UK), and the Manchester University Institute of Science and Technology.(UK)

**DR. LANRE TOWRY-COKER.**  
RIBA, FNIA, OPM (HARVARD), Ph.D  
Chairman/C.E.O



E&P Turn Key  
Profile

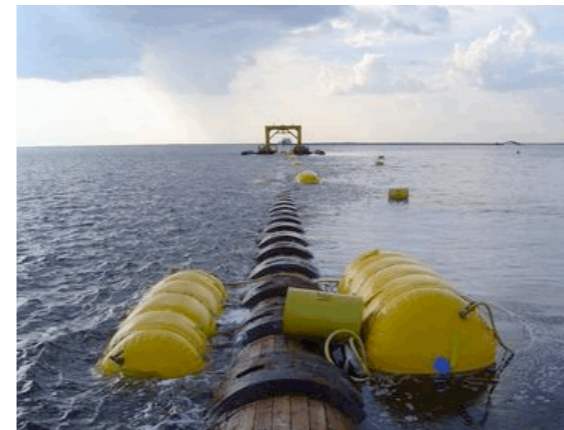


## Pipeline Construction

Construction of a cross-country pipeline requires a number of sequential operations along the designated pipeline right-of-way. These operations are virtually the same for all cross-country pipelines, but personnel and equipment can vary widely, dependent upon such factors as the time required for completion, terrain, climatic conditions, seasonal weather patterns, number and nature of road and river crossings, morphology, soil properties, rock formations, density of woodlands amongst other factors. WAOS has the reputation for completing its pipeline projects on time and to budget in the most difficult of conditions.

For E&P projects, pipeline construction can be capital intensive. WAOS owns, leases, operates and maintains the specialized equipment necessary for the pipeline construction business and possesses capability to field this equipment in the shortest possible time ensuring best possible value.

Very specialized equipment and techniques are required to construct pipelines across wetland swamp and offshore. WAOS favors industry proven construction methods throughout its operations and in addition to primary offshore and swamp equipment such as lay barges, dredges and swamp backhoes, WAOS has made substantial investment in support vessels, including tugboats, barges, supply boats and houseboats, equally required to maintain and support offshore, swamp and dry-land pipeline construction spreads.





## Construction

Construction services are provided through our fleet of company-owned and leased equipment which includes vessels, barges, pipe-laying equipment, heavy construction equipment, transport/lifting equipment and camp facilities. WAOS's equipment fleet is supported by an extensive inventory of spare parts and tools. WAOS owns and operates fabrication facilities in Ogbogoro and Trans Amadi Industrial Layout, Port Harcourt; supported by our office in Lagos.

Construction services include, amongst others, fabrication, assembly, installation, maintenance, and replacement of:

- Cross-country pipelines
- Subsea pipelines and facilities
- Offshore pipelines and end stations
- Offshore jackets, decks and facilities
- Modular processing facilities
- Piers and bridges
- Pump and meter stations
- Pressure vessels
- Gas compression
- Gas processing facilities
- Oil and gas production facilities
- Loading facilities



**TCA** was founded over 35years ago by Dr Lanre **Towry-Coker**, the Principal. Since its inception it has grown into a large multi-disciplinary practice incorporating Architects, Project Managers, Planners, Interior Designers, Landscape Designers, Quantity Surveyors, Technicians and Administrative staff.

The office is situated in Victoria Island, Lagos, in our own purpose-built development of five floors. The office is organized as separate design studios to enable proper integration of new projects under designated group leaders. At TCA we believe in the value of giving a personal service to clients. Hence each of the architectural design teams is lead by the principal or an associate, ensuring competent management from inception to completion. We aim to achieve the highest standard of service and quality in architecture, at all times. To this end there is an in-house Computer Aided Design (CAD) unit managed by a qualified and experienced architect.

Because of our belief that an efficient communication network is the backbone of any successful project team, we are continually striving for innovation by investing in systems that increase the capacity for information exchange between our project teams. The manifestation of this is our ability to provide an integrated design and construction project management package. The company has developed considerable expertise over the years in formulation of consortia and has won several competitions with consortia of different Nationalities. This has assisted TCA in developing management expertise.

Furthermore we have proved ourselves in the past by participating in and winning many designs competitions involving architectural practices from Nigeria and abroad. These include part of the Master plan for the new federal capital in Abuja (1977), Abuja Sheraton Hotel, Abuja international Conference Center, Former Savannah Bank Headquarters, AIB (BCCI) Plaza, Mobil Oil Residential Development at Lekki, Shell Residential Development at Ikoyi and the Lagos State Water Corporation Headquarters Building, Ijora, Panoco Headquarters, Victoria Island, Lagos.

TCA won the competition for the design and supervision of the new World Bank Mission in Abuja. The proposed development includes the Mission Office, the Resident Representative, and Residence (7 No) for Expatriate Staff.

**More than 110 firms – Nigerian and Foreign, submitted entries for the competition.**



# Associated Firms

- ABS Europa
- ARISE
- BOROVA Construction & Contracting Inc
- Business Objects Ltd
- Cityscape International PLC
- Climax Tours Ltd
- Construction Economists Partnership  
Quantity Surveyors, Construction  
Cost Consultants
- COSTEC
- DORI CONSTRUCTION
- Edilsider Group
- FIVE STAR TRAVELS
- Habitacional S.L
- Hero Glass- - Glass for constructio
- Hospital for sale -German
- INTER DESIGN & PARTNER
- International Hi-tech Industries Inc
- KLC
- KOA CONSULTANTS
- KOREA LAND COMMISSION
- Ligabue Catering
- Mazars -Financial advisory services City of London.
- MCH Metado Construction
- MSA
- METALUM
- Mithras Anlagenbau Gmbh & Co KG
- Mitrax -Solar Power Solar  
(1 megawatt-10 megawatt)
- NA Construction & Trading Co Ltd
- NAIRDA GROUP
- Ove Arup & Partners, Lagos Civil  
& Structural Engineering
- Pan Ocean
- Pin Consult Associates, Lagos Mechanical  
& Electrical Engineering
- Pozzoli Depurazione SRL
- Roediger- - Sewage solutions
- Siefert International London Architects/Planners
- Tunji Adejumo Associates Landscape Architects.
- Unecon Associates, Lagos Mechanical,  
Electrical Engineering/  
Fire Protection
- What's New
- West African Oil Service Ltd



E&P Turn Key  
Profile



## Fabrication

Utilizing in-house engineering enables us to largely fabricate to our own designs. This avoids interface issues that develop when E&P Contractors use third party Engineering Companies who equally, may not be that experienced in producing designs down to fabrication level, or indeed preparing designs for efficient fabrication at all. WAOS Turnkey capability gives us opportunity for complete control of the EPC process and, more efficient means to deliver practically engineered major equipment and structures with improved reliability at relative reduced cost.

WAOS have fabricated such diverse deliverables as process modules, subsea templates, flare bridges, offshore jackets and decks and have completed sufficient fabrication projects to now firmly establish credentials as a qualified and reliable provider in this highly competitive market.

WAOS is one of the few companies in West Africa who are truly qualified and able to deliver locally executed fabrication that meets quality and schedule requirements. Growing insistence on Local Content by Government makes WAOS's service capabilities all the more attractive to international and local E&P project developers, enabling them to meet criteria set out for Local Content through the use of WAOS' services.



35 years





E&P Turn Key Profile



## Drilling Operations

WAOS has a team of experienced professionals adept at the management of all types of onshore & offshore drilling campaigns. From rig mobilization to shutdown, we have the capacity to supervise rig operations in all Nigerian environments. We bring the spectrum of support capabilities to enable drilling to progress at its most efficient capacities on a day to day basis.

Having long since understood the dynamics of a successful drilling campaign over the range of Nigerian drilling environments, we have adapted the capabilities of our team to bring the most adept, functional supervision of rig work to the fore. Working hand in hand with operators to deliver the most project value for cause, the WAOS team is well positioned to managed all aspects of E&P Client drilling workscope. Our range of professional drilling management services include:

### DRILLING

- Drilling Operations and Well Control
- Drilling Project and Risk Management
- Directional Drilling and Surveying
- Horizontal, Extended Reach and Multilateral Drilling

### WELL OPERATIONS

- Cementing
- Fishing Operations
- Stuck Pipe & Hole Cleaning
- Well Control
- Tubing & Casing
- Drilling Fluids

### INTEGRATED OPERATIONS

- Advanced Completions
- Cased-Hole Evaluations
- Coiled Tubing Operations
- Heavy Oil Production Using Steam Injection
- Integrated Production Systems
- Sand Control
- Oilfield Water Management
- Problem Well Analysis
- Production Engineering and Operations
- Well Intervention projects.

## RESIDENTIAL

Since its inception the Practice has carried out numerous residential projects, for private clients, speculative developments, public corporations and Authorities. The scale of these developments vary from exclusive individual homes to vast residential estates, for low, middle and high income groups.



www.towrycoker.com

35 years

# MOBIL OIL RESIDENTIAL DEVELOPMENT, LAGOS



E&P Turn Key Profile



## Installation

Customers expect installation works to smoothly dove-tail into their overall field operation and even though many interfaces will be outside E&P Contract boundaries. This reality implies absolute need for demanding schedules and exacting installation criteria to be delivered, irrespective of problems and challenges that frequently arise when opening-up a brownfield workforce/s, facing sudden and inclement weather, or local disturbances. It is in such circumstance that the underlying benefit of choosing WAOS comes to the fore.

If problems arise, WAOS staff, draw upon a wealth of past experience, can quickly resolve problems, usually without the Customer even being aware there was an issue. This approach is a Company mantra; WAOS appreciate our Customer's expectation for job's to be delivered within planned criteria; without excuse. WAOS pride ourselves on being the no nonsense contractor of choice, we won't come to explain why it can't be done, rather – we find the solutions and just do it.....

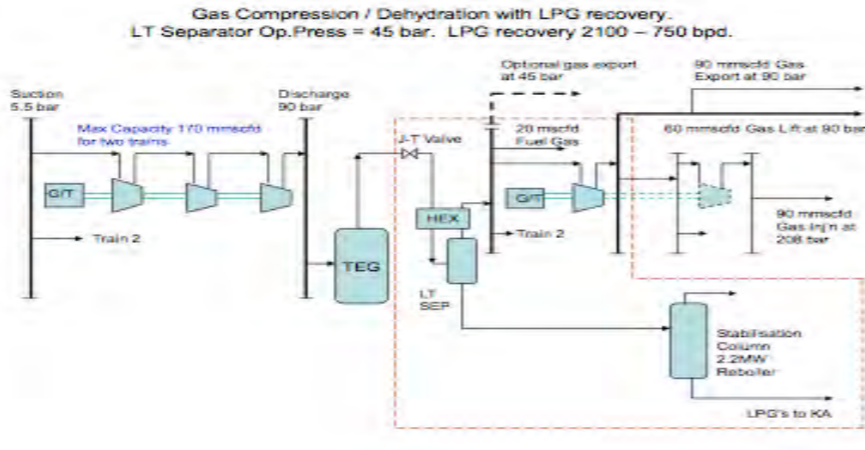


BUILDING TYPE:  
RESIDENTIAL CONDOMINIUMS  
MAISONETTES  
SIZE: 62 UNITS  
LOCATION: MAROKO, LAGOS  
COMPLETION: 1994





E&P Turn Key Profile



# Engineering

It is our depth of planning capability & experience, focused and seasoned by our West African experience that enable WAOS confidently tender “turn-key” E&P packages, or lesser component parts thereof. WAOS key staff hold enviable track records in onshore, swamp, coastal and offshore E&P project environments, informed by local experience to guide which technical approach is most likely to succeed in a particular circumstance. Our project management expertise further enhances our ability to drive project works from start to finish. Whether conceptual, front-end (FEED), detail design, drilling, field planning, construction and installation engineering, field service or maintenance engineering; WAOS has the people, equipment, commitment and corporate experience to get the job done.

Our engineering services include among others:

- Feasibility studies
- Engineering services
- Conceptual engineering services
- Detailed design services
- Production Engineering
- Route/site selection
- Material procurement
- Drilling & Related
- Export planning

To complement our engineering services, WAOS also provides a full range of field services, including:

- Material receiving and control
- Field services
- Construction management
- Project Warehousing
- Facilities startup assistance
- Operation of facilities
- Commissioning/startup

# IDEJO CLOSE CONDOMINIUM APARTMENTS VICTORIA ISLAND, LAGOS



This TCA development is located in the diplomatic zone of Victoria Island.

The accommodation consists of 12 split level maisonettes of three sizes; four units of 4 bedroom/study-library, four units of 3 bedrooms, four units of 2 bedrooms and an office of approximately 350m/2 . Plus amenities such as car parking and stewards accommodation. A sizeable swimming pool and extensively landscaped area are incorporated.



Dakar Road Apartments



This prestigious gated community is located in a quiet close in a residential area of Ikoyi. It is fully air conditioned with several reception rooms, six bedrooms and swimming pool in carefully landscaped gardens.

# RESIDENTIAL DEVELOPMENTS



E&P Turn Key Profile



## Project Preparation

Once a Field Development Plan is determined and agreed with Stakeholders in principle, E&P Services introduce further WAOS Divisions to the Plan:

- Engineering & Procurement
- EPC Services (construction and logistics)
- Drilling
- Legal & External Affairs

These Divisions review and develop their respective discipline contents in the Field Development Plan; prepare drawings and designs; long lead material bills; fabrication and construction schedules and other key documents that together establish what need be done; how it will be done; at what cost and schedule. As well, many 'soft deliverable' tasks now commence to further cement assurance on Project costs, schedule and success by preparing:

- Conceptual Design Package with support presentations to DPR (for swamp locations)
- Field Development Plan to DPR
- Prepare Drilling Contracts & Well Programs
- Permit-to-Surveys for potential pipeline corridors
- Tie-in details for sales crude together with a preliminary routing and Agreement
- Documentation for ROW procurement of each pipeline and Site
- Dredging scope of work & maps, quantities etc.
- Negotiate and prepare Host Community and Labor Relations Processes
- Source, pre-qualify and prepare Project suppliers/vendors list
- Procurement processes to meet Project complexities compatibility and purchasing, cash management and accounting processes
- Translate Conceptual design into discrete Package Equipment, prepare equipment specification bundles and details for issuance to qualified Vendors
- Develop preliminary materials orders & civil Bulks

At this juncture, Stakeholders are in possession of likely costs, returns and financing options to bring their field to production and can make an informed 'go no-go' Final Investment Decision – 'FID' accordingly.



Residential Development, Ikoyi, Lagos

Residential Development, Ilado Close, Ikoyi, Lagos



Nigeria Army Post Exchange, Lagos



Residential Development, Ikoyi, Lagos



Luxurious Residential Apartment, Port Harcourt.



Luxurious Residential Apartment, Victoria Island, Lagos.



Luxurious Residential Apartment, Port Harcourt.

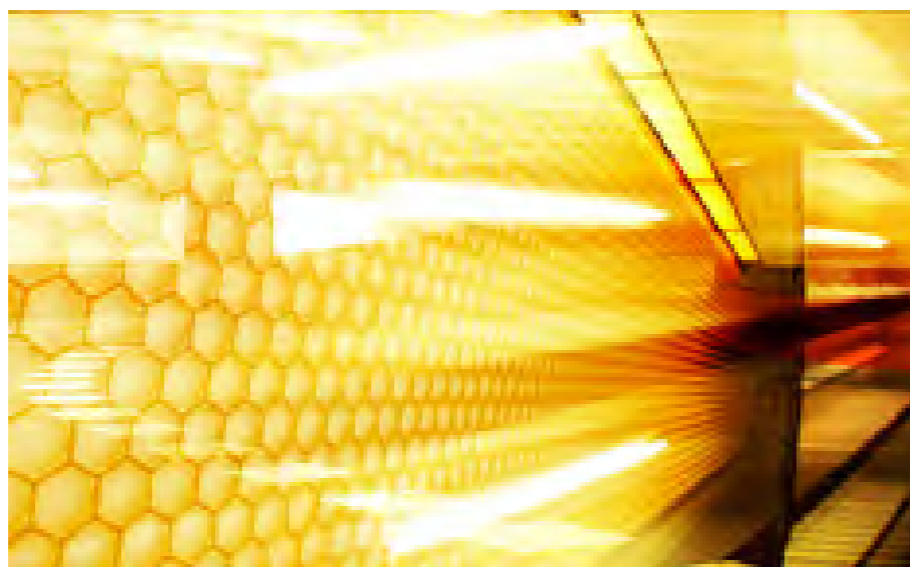


## E&P Turn Key Profile

West African Oilfield Services

Lagos Office  
4 Ibiyinka Olorunbe Close  
Victoria Island, Lagos, Nigeria  
Phone +234.(0)1.280.0996  
Fax +234.(0)1.280.0995

Port Harcourt  
Plot 72, Trans Amadi Industrial Layout  
Port Harcourt, Nigeria  
Phone +234.(0)84.232.066



# Exploration & Production Services

Engineering | G&G | Drilling | Procurement | Fabrication | Installation | Construction | Pipeline Construction | Station Facility Construction | Marine Support | Project Planning & Support Services | Prospect Economics & Acquisition | Logistics | Personnel | Major Plant & Equipment

Small and Marginal fields are being progressively released by Federal Government for indigenous Exploration and Production (E&P) Companies to develop.

In response to this significant shift in the E&P Marketplace, West African Oilfield Services (WAOS) – a reputable Turnkey Services Company with more than 40 Years presence in Nigeria formed a specialist **E&P Services Division** to support regional & marginal field Developers.

**E&P Services** provides an integrated Turnkey Field Development Packages that deliver everything necessary to develop a field 'from cradle to grave' as a seamless supply to Developers. WAOS perform subsurface and surface investigations, determine Well designs and production methodology, handling of process effluents; product evacuation and sales, obtain necessary Permits and Licenses, purchase and install hardware and commission same. If required, WAOS will also operate the field on behalf of the Owner.

**E&P Services** possess the overall experience and vision to optimally develop new fields, supported by 'in-house' sub-surface, drilling and facilities groups who analyse, study and prepare Field Development Plans to spell out road map economics and cost; meet statutory submission requirements and arrange Project Financing.

**WAOS** is your 'no nonsense' indigenous Contractor with unrivalled in-country experience, capabilities and equipment to deliver proven and cost-effective solutions in the Nigerian working environment.

### MANAGEMENT EXPERIENCE

- Established presence in West Africa for over 40 Years.
- Unrivaled regional project management resources.
- Straight line accountability and integrity.

### SERVICE AND EQUIPMENT

- End-to-end services with the equipment and seasoned professionals to execute.
- Adaptive solutions to enhance project value and Return On Investment.
- Commitment to 100% Client satisfaction.

### VALUE DRIVEN

- Turn-key solutions that exceed customer expectation.
- Comprehensive project capabilities; proven success.
- Best "all-in" solution for West African E&P projects.

# COMMERCIAL

Our ability to evaluate our clients' briefs and to draw upon specialists in all fields, from home and abroad has enabled us to become more efficient and effective.

Over a number of years the practice has developed its particular joint venture skills in commercial proposals throughout Nigeria. Using this approach successes have been achieved to many new building designs for our clients. These developments range from banks, office blocks, motor-way service station, conference centers, religious buildings and hotels.



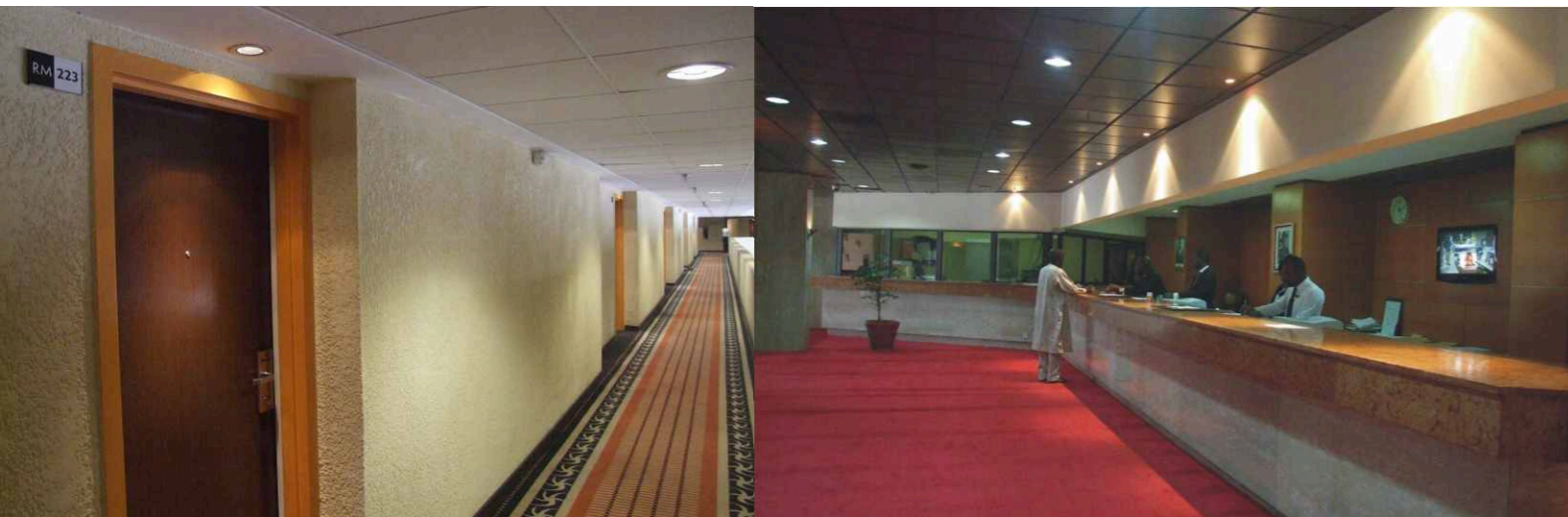
www.towrycoker.com

35 years

# NICON LUXURY HOTEL ABUJA



BUILDING TYPE: HOTEL  
SIZE: 700 ROOMS  
LOCATION: ABUJA, FED. CAPITAL  
CLIENT: ABUJA INTERNATIONAL HOTEL  
COMPLETION: 1994



# CARBON CREDIT CONSULTING



The emission reduction targets under these schemes are ambitious. As a consequence, many companies are finding it cheaper to simply buy carbon credits, rather than attempt to meet their targets solely through their own actions. The carbon credit trade is the fastest growing business in the world. The only carbon offsets that can be utilized under the European Union Emissions Trading Scheme are carbon credits created under the Clean Development Mechanism (CDM) of the Kyoto Protocol called Certified Emissions Reductions (CERs).

GTI'S services include the following:

- Gaining funding for carbon greenhouse gas emission reduction projects
- Advice on carbon price development & trading
- Brokerage of carbon allowances for industrials, spot OTC physical transactions
- Assistance with generating carbon credits from JI and CDM projects
- Strategic analyses of oil, coal and gas prices

The CDM and other similar schemes offer a wide range of possibilities for project funding. If you have a project, which you think will lead to carbon greenhouse gas emission reductions, talk to us, we'll advise you on its likely success. Best of all these schemes offer companies' access to a swiftly growing pool of capital to fund projects, which will improve your bottom line.



Many Western governments, including all of the European Union, have passed laws that require their key industries to meet fixed significant greenhouse gas emissions reduction targets. These targets create financial incentives for individual companies to reduce carbon emissions such as carbon dioxide (CO<sub>2</sub>) and methane (CH<sub>4</sub>) emissions from the combustion of fossil fuels and other activities. If individual companies cannot meet their allocated emission targets through internal action to abate emissions, then they are compelled by law to purchase carbon credits to make up the shortfall. These carbon credits can either be excess allocated permits that are purchased from other companies through emissions trading schemes, or else so-called carbon 'offsets', which are created from emissions reductions projects outside of the emissions trading scheme.

Carbon offsets are typically achieved through financial support of projects that reduce the emission of greenhouse gases in the short- or long-term. The most common project type is renewable energy, such as wind farms, biomass energy, or hydroelectric dams. Others include energy efficiency projects, the destruction of industrial pollutants or agricultural byproducts, destruction of landfill methane, and forestry projects. Some of the most popular carbon offset projects from a corporate perspective are energy efficiency and wind turbine projects

Major emissions trading schemes include the European Union's Emissions Trading Scheme (EU ETS) and the International Trading Scheme (IET) under Article 17 of the Kyoto Protocol.

## Five star hotel

The Nicon Luxury Hotel is one of the first major buildings constructed in Abuja, Nigeria's new Federal Capital.

In this instance, Towry Coker Associates, not only formed the ownership Company, Abuja International Hotels Ltd, but also obtained equity participants from the public and private sector. From this, it was part of the competition brief to also organise and syndicate both local and off-shore financing, inclusive of an initially five-star hotel management company.

For this part of the brief TCA selected Sheraton Management Corporation, one of the most progressive and profitable hotel management companies in the world.

The practice formed a consortium called the TCA/Bredero Abuja Consortium, to carry out the tasks of design, financing and construction for our client, Abuja International Hotels Limited.

This building is dispersed throughout 14 levels and includes 530 standard guest rooms, 27 business suites, 20 luxury suites, 5 presidential suites, all day diner (Potters Kin) with a seating capacity of 230, Mediterranean restaurant (Mediterranean Terrace) seating capacity 50, french restaurant (Panache) seating capacity 65, Chinese restaurant (Chin Long) seating capacity 95, five bars including a discotheque, a congress/ballroom, bathroom, lettable offices, shops and health club.

# ECOWAS PARLIAMENT, ABUJA



BUILDING TYPE:  
CONFERENCE CENTER  
SIZE: 11,000 SQ METERS  
LOCATION: ABUJA, FCT



The ADCP Conference Centre being constructed for the Federal Capital Development Authority, is also amongst the first major public buildings undergoing construction in Abuja, Nigeria's new Federal Capital City. The complex is designed to meet a multiplicity of requirements and consists of two acoustically designed auditoria able to accommodate 1,000 delegates and 250 delegates respectively, with numerous office, committee rooms, restaurant, bar, viewing galleries and several reception areas.

The building has been designed to operate as a self-sufficient unit with its own air conditioning, generators etc.

# ARK TOWERS, VICTORIA ISLAND, LAGOS



ARK TOWERS  
BUILDING TYPE: OFFICES BLOCK DEVELOPMENT  
LOCATION: VICTORIA ISLAND, LAGOS  
CLIENT: PAN OCEAN  
COMPLETION: 2003



PROPOSED 15 STOREY OFFICE BUILDING,  
VICTORIA ISLAND, LAGOS



**Guy Langton** - Guy started his career in investment services for the family firm in the UK having studied for the industry certification requirements whilst still at the University of Exeter studying for a degree in Business Finance and French.

In 2007 he stepped down from the family business to jointly found Swiss Asset & Invest AG with Charles. Since then SAI AG has had a keen focus on emerging markets with an emphasis on commodity transactions in Africa and Asia. Guy has travelled extensively in Africa and Asia and spent considerable time overseeing and setting up on the ground operations for the company's activities in precious metals exportation and in the identification of further opportunities. Guy ensures that SAI AG provides a full time operational presence in key geographical areas. Guy also sits as a silent partner in a fine arts company, Parvenu Art, founded early in 2010

**Charles Langton** - Born in Johannesburg and educated in the UK, after university Charles began his career in the UK based 30 year old family wealth management company, and worked for 8 years in this role as a qualified wealth manager. As this business had an increasingly European and high net worth (HNW) focus, Charles and his brother Guy decided to set up Swiss Asset & Invest AG, based in Zug. SAI's primary focus was to offer consultancy to international HNW clients and connections. In the last few years the company's primary focus has moved strongly towards the trading of physical commodities from emerging markets, either directly in the capacity of Swiss Asset & Invest AG, or in assisting clients already established in this sector. Swiss Asset & Invest AG is currently engaged in investment for a number of major mine owners primarily throughout Africa. Charles travels extensively, and has experience of setting up and overseeing successful on the ground operations in the countries of source.





WATER HOUSE, Ijora, Lagos

CAPL HEADQUARTERS  
Apapa, Lagos

**Swiss Asset & Invest AG is a physical commodity trading company and consultancy provider based out of Zug and Baar in Switzerland with a primary focus on the production and extraction of precious metals.**

**Guy and Charles Langton acquired Swiss Asset & Invest AG in 2007 for the purposes of providing the platform for their commodities trading activities in predominantly Africa and Asia. Swiss Asset & Invest AG now today also incorporates Swiss Asset & Invest Ghana Ltd., Swiss Asset & Invest Asia Ltd., as well as Kijani Resources Ltd, the latter being the physical gold trading arm established in 2010 for funnelling investment into emerging gold production markets.**

**The partners of SAI Group are experienced individuals having solid track records in commodity consultancy and physical trading as a result of a wealth of professional connections and experiences.**



BLACKWOOD HODGE (NIG PLC)  
Apapa, Lagos



FOUNTAIN TRUST BANK



Office block for CAPL, Lagos



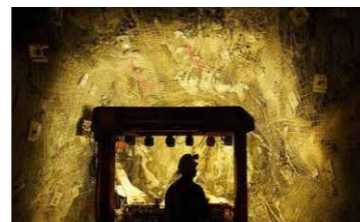
OBAFEMI AWOLowo HOUSE

BUILDING TYPE:  
MULTIPLE OCCUPANCY OFFICE BLOCK  
SIZE: 7200M2  
LOCATION: IKEJA, LAGOS  
CLIENT: WEMABOD ESTATES  
COMPLETION: 1986



AFRICAN INT. BANK OF NIGERIA

BUILDING TYPE: OFFICES & BANK  
SIZE: 10,000 M/2  
LOCATION: VICTORIA ISLAND, LAGOS STATE, NIGERIA.  
CLIENT: AFRICAN INTERNATIONAL BANK OF NIGERIA.  
COMPLETION; AUGUST, 1994.



GUARANTY TRUST BANK  
VI, LAGOS

# OFFICE DEVELOPMENTS

# BLACKWOOD HODGE BADAGRY ROAD, ASHOGUN



UAC BUILDING  
BUILDING TYPE: OFFICES BLOCK DEVELOPMENT  
LOCATION: ABUJA  
CLIENT: UAC

## New head office, parts storage and workshops for Blackwood Hodge (Nigeria) Limited Badagry Road, Ashogun

This is the largest development undertaken by our client in Africa.

The accommodation consists of two storey office block of 1500sq. metres linked to a parts storage of 1750 sq metres. Incorporated within the workshops is a mezzanine level of further offices and toilets etc. Over stores and smaller workshops.

Other buildings include a training school, clinic, canteens, a type storage warehouse of 1250 sq metres, an engine test house and a fuel station. The whole complex is self-sufficient in electricity and water.

# PHARMACEUTICAL FACTORIES



Water Corporation, Ijora, Lagos

Pan Ocean Oil Office Development, Victoria Island, Lagos.



## Pharmaceutical and soap finishing factory

This self-sufficient pharmaceutical plant for the manufacture of antiseptic ointments and soaps, of Chemical & Allied Products Limited (formerly ICI Nigeria Limited) at Apapa, Lagos.

The accommodation of 2,000 sq metres incorporates fully air conditioned production area, raw materials and finished products warehouse. A first floor link was also provided to accommodate the existing 300 sq metres office block.

This factory for Farmex (Nigeria) Limited (E. Merck. Darmstadt, W. Germany) at Otta, Ogun State was constructed to produce liquid products.

Phase 1 of the development consists of a production building on two floors totaling 1800 sq metres, a combined raw material and finished goods warehouse totaling 1100 sq metres, an office block on two floors linking to the production building totaling 1100 sq metres and a 200 sq metres power house. The factory is fully air conditioned and equipped with full standby power, hot oil heating and compressed air. An advanced water treatment plant has also been installed providing drinking water to the whole plant and deionised water for the production. Special attention was given to the social and welfare facilities with a modern canteen, clinic, training school and well equipped laboratories and bottle manufacturing facilities being provided.

# OFFICE DEVELOPMENTS



PROPOSED UPDC COMMERCIAL DEVELOPMENT (PHASE TWO), ABUJA



Residential Development, Ikoyi, Lagos

# INDUSTRIAL

Our experience in this area of development is extensive as we have completed projects ranging from standard warehouse units to assembly factories and pharmaceuticals plants.



Residential Development, Ikoyi, Lagos



Office Blocks, Ilado Close, Ikoyi, Lagos



Commercial Development, Ikoyi, Lagos



PROPOSED 15 STOREY ULTRA MODERN OFFICE BUILDING ,  
FF MILLENNIUM  
VICTORIA ISLAND, LAGOS  
ONGOING PROJECT SINCE 2009



35 years

# WORLD BANK RESIDENT MISSION HEADQUARTERS AND RESIDENCES, ABUJA.

# PROPOSED SATELLITE TOWN, KARKANDJERI, N'DJAMENA, CHAD

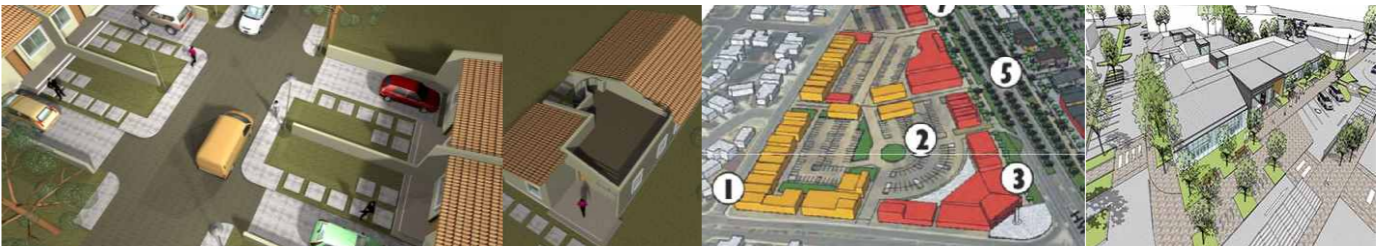


### Bank Headquarters

The proposed 15 storey building constructed for Savanna Bank of Nigeria Limited/Bank of America S.A. at Broad Street, Lagos. This project was designed in collaboration with one of our associates, Seifert International.

This new bank headquarters incorporates 26,000 sq metres of useable space with special features like double shielded solar reflective glass, landscaped interior courtyards, computer facilities for banking and information retrieval, spacious entrances for staff and office tenants, underground car parking, canteen, restaurant for senior staff, training school, and other specialized features like water treatment plant will result in this building being self-sufficient.

Project was a competition won out of 110 international competitors.



1. Internal roads 2. parking 3. street facing shops 5. major arterial roads 7. bus stops



1. civic centre/ administrative offices 2. office complex/ shopping